



ROOF TILES AND ACCESSORIES





QUALITY YOU CAN TRUST

NORTHSTONE (NI) LTD ARE PART OF CRH PLC A WORLDWIDE MANUFACTURER AND SUPPLIER OF BUILDING MATERIALS.

The Northstone roof tile brand offers a unique range of roof tiles designed to compliment the roof covering of all types of buildings, from the one off self build project through to the largest housing development, schools, or commercial property.

Northstone have been manufacturing quality roof tiles since 1964, and their experienced staff ensure their enviable reputation for quality and reliability is consistently achieved. All roof tiles are manufactured to the latest European standard BS EN 490 within a recognised management system BS EN ISO 900. A full range of roofing accessories is available to match the four tile profiles including a comprehensive range of dry fix ridging and dry fix verge solutions.

THE COMPANY ALSO OFFERS A COMPREHENSIVE SUPPLY & FIX SERVICE WITH EXPERT, FULLY EQUIPPED, SELF SUFFICIENT ROOFING SQUADS readily available for either re-roofing or new build projects. Northstone install roof tiles to comply with BS 5534:2014 and the roof tilers carry the CSR safety cards. The contracts team are members of the trade body, The National Federation of Roofing Contractors, and are Trustmark registered. A fully trained and experienced team of technical representatives are on hand to support customers with free estimates, technical advice, samples and design assistance including specification detailing. Contact information is on the back page. Northstone are committed to product development and continuous improvement for its roof tiles and fittings. All information contained in this brochure is accurate at the time of printing.



DONARD

The Donard is a traditional flat tiles offering the clean lines and smart finish of an interlocking slate pattern. The Donard has an approximately 26mm leading edge and has been tried and tested over many years to withstand the most extreme weather conditions throughout the UK and Ireland. A full range of maintenance free dry fix accessories is available and additional fixings have been designed for extremely exposed environments and steep and low pitched roofs. The Donard is manufactured with through coloured pigment.



Available accessories for these tiles

- ✓ Standard Verge
- ✓ Dry Hip
- ✓ Finials
- ✓ Ornamental Ridge
- ✓ Dry Ridge
- ✓ Dry Verge
- ✓ Dry Valley
- ✓ Vent Tiles

Standard Ridge = Universal Angle



TECHNICAL DATA

Description	T-EN490-IL-0-RF-300-/-/399-5.2
Size of Tile	420mm x 334mm
Pallet Size	1020 x 1065mm
Pallet Weight	998kg (approximately)
Tiles per Pallet	192 tiles
Minimum Pitch	17.5° (100mm headlap)* 22.5° (75mm headlap)
Maximum Pitch	54° (without special fixing) see fixing information, page 23
Minimum Headlap	75mm
Maximum Gauge	344mm
Hanging Length	399mm
Nominal Cover Width	301mm
Tile Weight	5.2kg
Nail Hole Diameter	5-8mm
Nail Hole position	40mm from top of tile
Covering Capacity per m²	9.7 tiles@75mm headlap, 10.4 tiles@100m headlap
Weight of Tiling (approx.)	50.5kg/m ² @ 75mm headlap
Battens Required (net)	2.95Lm @ 75mm headlap, 3.1Lm @ 100m headlap
Batten Size	50mm x 25mm for rafters not exceeding 600mm centres
Tile Nails	50mm x 3.35mm
Tile Clips	Tile, Verge and Eave
Eave	Standard Tile
Verge Bedded	Purpose made Left and Right Hand Half Tiles, and Left Hand Full tiles, bedded over a soffit strip
Verge Dry Fix	Northstone Dry Verge System
Ridge Bedded	Universal Angle Ridge 0.455mm long
Ridge Dry Fix	Northstone Dry Ridge System
Hip Bedded	Hip Angle Ridge 0.455m long
Hip Dry Fix	Northstone Dry Hip System

Minimum Fixing Guide: All tiles should be fitted to BS5534 : 2014 where a minimum requirement specifies a minimum of all tiles nailed once. Depending on site exposure, location, height to ridge, height to eave rafter length roof pitch and proximity of roof to higher artificial features and aviation activity more onerous fixings may be required. Contact our technical team for advice or a wind loading fixing pattern. *For roof pitches between 17.5°-22.5° speak to Northstone Technical Department for rafter lengths over 4.5m long.



Matt Black



Granite Grey



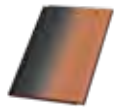
Basalt Grey



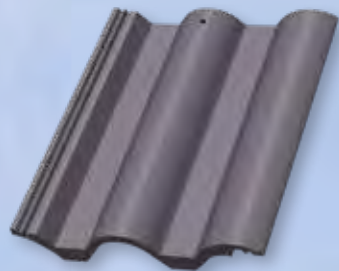
Turf Brown



Brick Red



Antique Red



DERRIE

The Derrie tile has a traditional double roll pattern which has a proven performance for over forty years. The double roll gives the tile an inherent strength and far exceeds any strength tests specified by the British and European standards for roof tiles. The raised interlock and wide anti capillary bars improves the products performance at lower pitches. The Derrie also performs well in areas of high winds. A full range of maintenance free dry fix accessories is available and additional fixings have been designed for extremely exposed environments and steep and low pitched roofs.

The Derrie is manufactured with through coloured pigment.



Available accessories for these tiles

- ✓ Standard Verge
- ✓ Dry Hip
- ✓ Dry Valley
- ✓ Ornamental Ridge
- ✓ Dry Ridge
- ✓ Dry Verge
- ✓ Finials
- ✓ Vent Tiles

Standard Ridge = Universal Angle



TECHNICAL DATA

Description	T-EN490-IL-32-RF-300-/-405-5.2
Size of Tile	420mm x 335mm
Pallet Size	1020 x 1065mm
Pallet Weight	1000kg (approximately)
Tiles per Pallet	192 tiles
Minimum Pitch	17.5° (100mm headlap)* 22.5° (75mm headlap)
Maximum Pitch	54° (without special fixing) see fixing information, page 23
Minimum Headlap	75mm
Maximum Gauge	344mm
Hanging Length	405mm
Nominal Cover Width	300mm
Tile Weight	5.1kg
Nail Hole Diameter	5-8mm
Nail Hole position	33mm from top of tile
Covering Capacity per m²	9.7 tiles@75mm headlap, 10.4 tiles@100m headlap
Weight of Tiling (approx.)	49.5kg/m ² @ 75mm headlap
Battens Required per m²	2.95Lm @ 75mm headlap 3.1Lm @ 100mm headlap
Batten Size	50mm x 25mm for rafters not exceeding 600mm
Tile Nails	70mm x 3.35mm
Tile Clips	Tile, Verge and Eave
Eave	Standard Tile
Verge Bedded	Purpose made Left Hand Full tiles, bedded over a soffit strip
Verge Dry Fix	Northstone Dry Verge System
Ridge Bedded	Northstone Half Round Ridge 0.455mm long
Ridge Dry Fix	Northstone Dry Ridge System
Hip Bedded	Third Round Ridge 0.455m long
Hip Dry Fix	Northstone Dry Hip System

Minimum Fixing Guide: All tiles should be fitted to BS5534 : 2014 where a minimum requirement specifies a minimum of all tiles nailed once. Depending on site exposure, location, height to ridge, height to eave rafter length roof pitch and proximity of roof to higher artificial features and aviation activity more onerous fixings may be required. Contact our technical team for advice or a wind loading fixing pattern. *For roof pitches between 17.5°-22.5° speak to Northstone Technical Department for rafter lengths over 4.5m long.



Matt Black



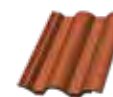
Granite Grey



Basalt Grey



Turf Brown



Brick Red



Antique Red

CAUSEWAY

The Causeway roof tile is Northstone's second generation thin leading-edge roof tile. The Causeway offers contractors, specifiers and home builders the beauty of a slate effect roof while keeping costs to a minimum. The Causeway is designed with a hidden interlock and a 17mm softened leading edge to improve its slate aesthetics. The effective cover width has been increased which reduces the number of tiles on a roof by up to 5%. This not only gives economic advantages but presents environmental benefits. A full range of maintenance free dry fix accessories are available and additional fixings have been designed for extremely exposed environments and steep and low pitched roofs. The Causeway is manufactured with through coloured pigment.



Available accessories for these tiles

- ✓ Standard Verge ✓ Dry Hip ✓ Dry Valley ✓ Ornamental Ridge
- ✓ Dry Ridge ✓ TLE Dry Verge ✓ Finials ✓ Vent Tiles

Standard Ridge = Universal Angle



TECHNICAL DATA

Description	T-EN490-IL-0-RF-311-/-400-4.75
Size of Tile	420 x 334mm
Leading Edge Depth	17mm approximately
Pallet Size	1020 x 1065mm
Pallet Weight	1140kg (approximately)
Tiles per Pallet	240 tiles
Minimum Pitch	17.5° (100mm headlap)* 25° (75mm headlap)
Maximum Pitch	54° (without special fixings)
Minimum Headlap	75mm
Maximum Gauge	345mm
Hanging Length	400mm
Normal Cover Width	311mm (approximately)
Tile Weight	4.75kg (approximately)
Nail Hole Diameter	5-8mm
Nail Hole Position	38mm from top of tile
Covering Capacity per m²	9.45 tiles at 75mm headlap 10.2 tiles at 100mm headlap
Weight of Tiling per m²	44kg/m² at 75mm headlap (approximately) 47.5kg/m² at 100mm headlap (approximately)
Battens Required per m²	2.95m at 75mm headlap 3.1m at 100mm headlap
Batten Size	50mm x 25mm for rafters not exceeding 600mm centres
Tile Nails	45mm x 3.35mm ring shanked aluminium clout nail
Tile Clips	Tile, Verge and Eave clips
Eave Tiles	Standard tile single lap
Verge Dry Fix	Northstone Dry Verge System (mechanically fixed)
Ridge Dry Fix / EasyFix	Universal Angle Ridge 455mm long fixed with Northstone Dry Ridge system
Hip Dry Fix	Universal Hip Angle Ridge 455mm long fixed with Northstone Dry Hip System

Minimum Fixing Guide: All tiles should be fitted to BS5534 : 2014 where a minimum requirement specifies a minimum of all tiles nailed once on the right hand nail hole. Depending on site exposure, location, height to ridge, height to eave, rafter length, roof pitch and proximity of roof to higher artificial features and aviation activity more onerous fixings may be required. Contact our technical team for advice or a wind loading fixing pattern. *For roof pitches between 17.5°- 25° speak to Northstone Technical Department for rafter lengths over 4.5m long.



Matt Black



Basalt Grey



Granite Grey



Turf Brown



Brick Red



Antique Red



DUNLUCE

The Dunluce roof tile is a variation of the Causeway thin leading edge tile with the impression of a line down the middle making it what is known as a mock bond tile.

When laid on a roof the mock bond impression gives the Dunluce the appearance of a smaller European plain tile when fitted on a roof. The headlap can be increased to 225mm to further enhance its small tile appearance but with considerable savings. A full range of maintenance free dry fix accessories is available and additional fixings have been designed for extremely exposed environments and steep and low pitched roofs. The Dunluce is manufactured with through coloured pigment.



Available accessories for these tiles

- ✓ Standard Verge
- ✓ Dry Hip
- ✓ Finials
- ✓ Ornamental Ridge
- ✓ Dry Ridge
- ✓ TLE Dry Verge
- ✓ Dry Valley
- ✓ Vent Tiles

Standard Ridge = Universal Angle

TECHNICAL DATA

Description	T-EN490-IL-0-RF-311-/-/400-4.75
Size of Tile	420 x 334mm
Leading Edge Depth	17mm approximately
Pallet Size	1020 x 1065mm
Pallet Weight	1140kg (approximately)
Tiles per Pallet	240 tiles
Minimum Pitch	17.5° (100mm headlap)* 25° (75mm headlap)
Maximum Pitch	54° (without special fixings)
Minimum Headlap	75mm
Maximum Gauge	345mm
Hanging Length	400mm
Nominal Cover Width	311mm (approximately)
Tile Weight	4.75kg (approximately)
Nail Hole Diameter	5-8mm
Nail Hole position	38mm from top of tile
Weight of Tiling	44kg/ m2 at 75mm headlap (approximately) 47.5kg/ m2 at 100mm headlap (approximately)
Covering Capacity per m²	9.45 tiles @ 75mm headlap 10.2 tiles @ 100mm headlap
Battens required per m²	2.95m at 75mm headlap 3.1m at 100mm headlap
Batten Size	50mm x 25mm for rafters not exceeding 600mm centres
Tile Nails	45mm x 3.35mm ring shanked aluminium clout nail
Tile Clips	Tile, Verge and Eave clips
Eave Tiles	Standard tile single lap
Verge Dry Fix	Northstone TLE Dry Verge System
Ridge Dry Fix	Universal Angle Ridge 455mm long fixed with Northstone Dry Ridge system
Hip Dry Fix	Universal Hip Angle Ridge 455mm long fixed with Northstone Dry Hip System

Minimum Fixing Guide: All tiles should be fitted to BS5534 : 2014 where a minimum requirement specifies a minimum of all tiles nailed once. Depending on site exposure, location, height to ridge, height to eave rafter length roof pitch and proximity of roof to higher artificial features and aviation activity more onerous fixings may be required. Contact our technical team for advice or a wind loading fixing pattern. *For roof pitches between 17.5°-25° speak to Northstone Technical Department for rafter lengths over 4.5m long.



Matt Black



Basalt Grey



Granite Grey



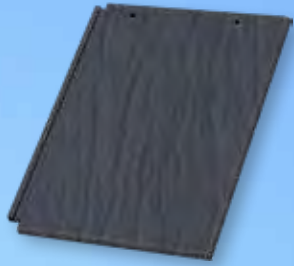
Turf Brown



Brick Red



Antique Red



CAUSEWAY RIVEN

The Causeway Riven roof tile is Northstone's second generation thin leading-edge roof tile. The Causeway offers contractors, specifiers and home builders the beauty of a slate effect roof while keeping costs to a minimum. The riven pattern on the surface of the tile along with the hidden interlock and 17mm softened leading edge helps improve its slate aesthetics. The effective cover width has been increased which reduces the number of tiles on a roof by up to 5%. This not only gives economic advantages but presents environmental benefits. A full range of maintenance free dry fix accessories are available and additional fixings have been designed for extremely exposed environments and steep and low pitched roofs.



Available accessories for these tiles

- | | | | |
|-------------------|--------------|--------------|--------------------|
| ✓ Standard Verges | ✓ Dry Hip | ✓ Dry Valley | ✓ Ornamental Ridge |
| ✓ Dry Ridge | ✓ Dry Verges | ✓ Finials | ✓ Vent Tiles |

Standard Ridge = Universal Angle



GEMINI

The award winning tile that's helping developers, planners and the environment

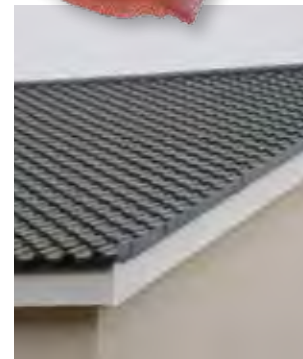


- Aesthetic appearance of a traditional plain tile when laid
- Lays to lower roof pitches – 22.5° (plain tiles 35°)
- Only 16.3 to 18.1 tiles per m² (60 for plain tiles)
- Hidden Tile Fixings
- Full Range of Dry Fix systems available
- Full Range of Ventilation Products
- Over 40% less timber battens required compared to plain tiles
- Lighter than plain tiles per m²
- Thin leading edge
- 40% CO₂ saving in manufacture compared to concrete plain tiles



CENTURION

The versatile concrete tile for low pitched roofing solutions.



- Manufactured since 1962
- Can be laid as low as 10°*
- Wind barriers behind leading edge to combat wind driven rain
- Hidden tile clip fixing
- Available in grey, brown and red
- Range of dry fix fittings
- Kitemarked to BS EN 490

**Call Technical Department for further information.*



VANGUARD V2

Traditional square top roof tile design

- Proven in tests to be one of the strongest tiles of its type
- Interlock feature, proven to give better driven rain, and 'ice blocking' performance
- Batten supports to allow free flow of air – keeps battens dry
- Available in Brown, Grey and Red
- Kitemarked to BS EN 490

*Call Technical Department for further information.



PLAIN TILE

Traditional appeal for roofing and vertical hanging at an affordable cost

- Hanging nibs designed and positioned for maximum strength
- Shape designed to improve air circulation between tile and batten
- New design gives greater resistance to wind uplift
- Available in Black, Brown, Grey and Red
- Kitemarked to BS EB 490:2011

*Call Technical Department for further information.



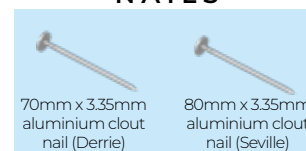
FIXING ACCESSORIES

DONARD

DERRIE & SEVILLE

CAUSEWAY & DUNLUCE

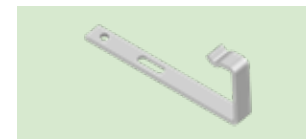
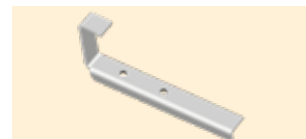
NAILS



TILE CLIPS



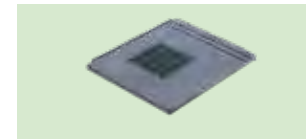
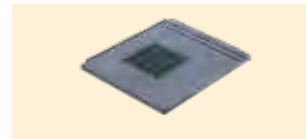
VERGE CLIPS



EAVE CLIPS



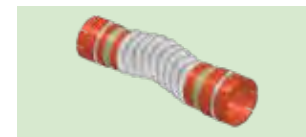
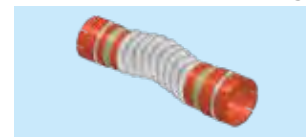
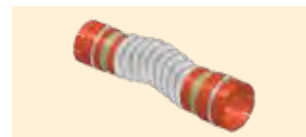
INLINE VENT TILES



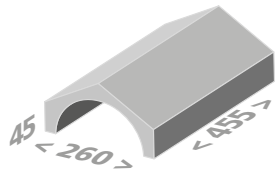
ADAPTERS



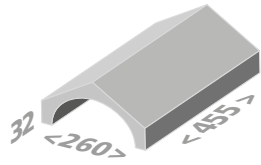
FLEXIBLE PIPES



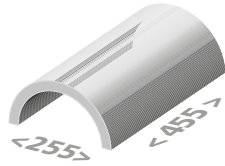
RIDGE TILES



Universal Angle Ridge



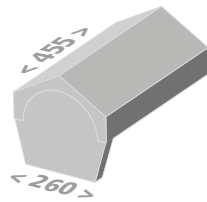
Hip Angle Ridge



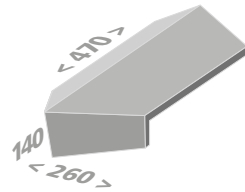
Half Round Ridge



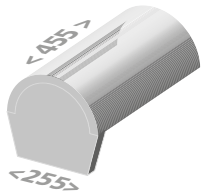
Third Round Ridge



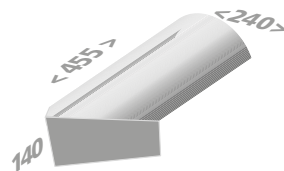
Block End Angle Ridge



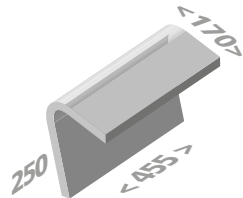
Block End Hip Angle Ridge



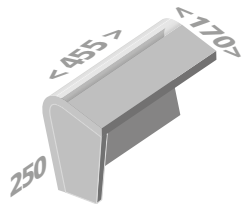
Block End Half Round Ridge



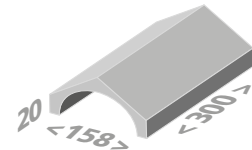
Block End Hip Third Round Ridge



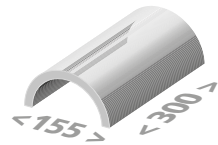
Mono Ridge



Block End Mono Ridge

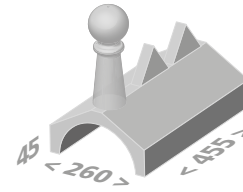


Baby Angle Ridge

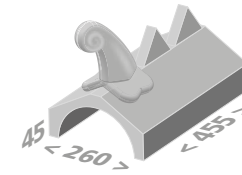


Baby Half Round Ridge

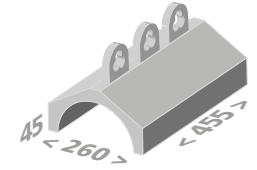
RIDGE TILES



Victoria Tall Ball Finial



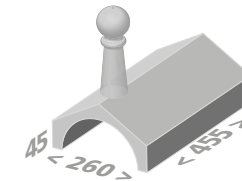
Victoria Scroll Finial



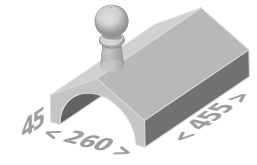
Crown Ridge



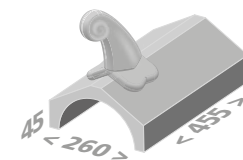
Victoria Ridge



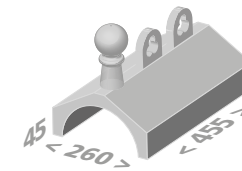
Tall Ball Finial



Short Ball Finial



Scroll Finial



Crown Ball Finial

PLEASE NOTE:
With ornamental ridge tiles allow for a four week lead time from order. All dimensions shown in mm.

The Northstone range of Ridge Tiles are available in the following colours:



Granite Grey



Matt Black



Brick Red

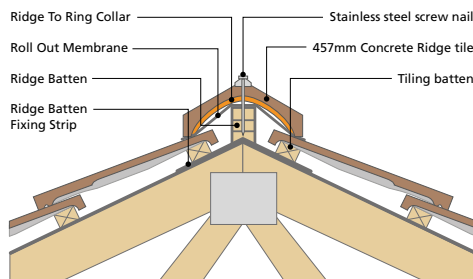


Basalt Grey



Turf Brown

FAST DRY RIDGE & HIP



Roofing Benefits:

- Maintenance free
- Eliminates the need for wet mortar
- Quick and easy to fix
- Internal union bracket providing discrete joint system
- Can be fitted in all weathers
- Defined mechanical fixing to BS5534:2014
- Complies with Building Regulations for mechanical fixing and ventilation
- Provides 5000mm²/m air flow
- Provides a weatherproof ventilation path from the outside when used as a complete system with Northstone roof tiles
- Wind resistance to 3800n/m² (min)
- Northstone Fast dry Ridge has been designed for use with all Northstone flat Roof Tiles. No liability can be accepted for use with any other tiles (separate system available for Derrie roof tile)

Components in a 5m Box:

Item	Qty.
① 5m Fast Ventilated Ridge Roll	x1
② Fast Unions (Universal Angle or Half Round)	x10
③ Fast Union Clips	x10
④ Ridge batten Connectors	x10
⑤ 100 x 4.5mm Stainless Steel Screw	x10
⑥ 6m Hip Accessory Pack, for use when Dry Fixing Hip Ridge	x1

FAST RIDGE FIXING GUIDE



- 1 Install the underlay 30mm down from the ridge apex and nail the ridge batten connectors to the roof rafters with two Galvanized Clout nails. Wrap the other legs around the 50 x 50mm ridge batten and secure with Galvanized Clout nails.



- 4 When using the dry verge system, locate the first ridge centrally over the Fast Ridge Roll and in line with the verge unit. Place the Fast Union at the end of the ridge tile and position the next ridge tile after it.



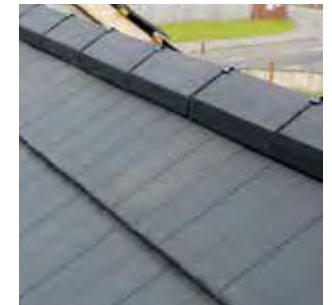
- 2 Lay the roof tiles within specification. Place the fast Ridge Roll centrally over the ridge batten and ensure the tiles are dust free and dry.



- 5 Position the Fast Union Clip into the slot in the top of the Fast Union and secure with the Fast Drive Screw.



- 3 Remove the tape protector and smooth the ridge roll over the laid tiles without crushing the corrugations.



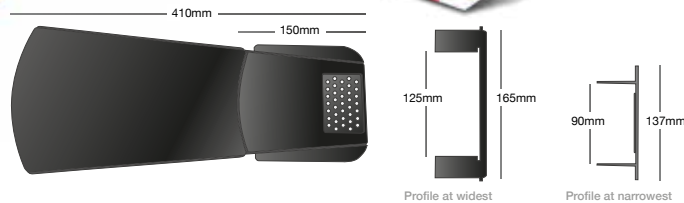
- 6 Finish the ridge with either a block end ridge or ridge end cap from the dry verge system.

UNIVERSAL EASY DRY VERGE

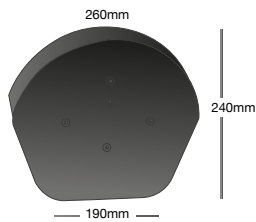


Top Four Key Points:

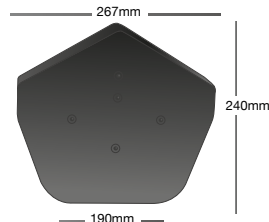
1. UN-handed units - Verge U can be used on both the left and the right verge.
2. Unique design to create a completely sealed verge, preventing water ingress and infestation.
3. Manufactured from Polypropelene for excellent flexibility and UV stability.
4. Complies with BS5534:2014 for verge fixing systems.



Half Round Ridge Cap



Angled Ridge Cap



Starter

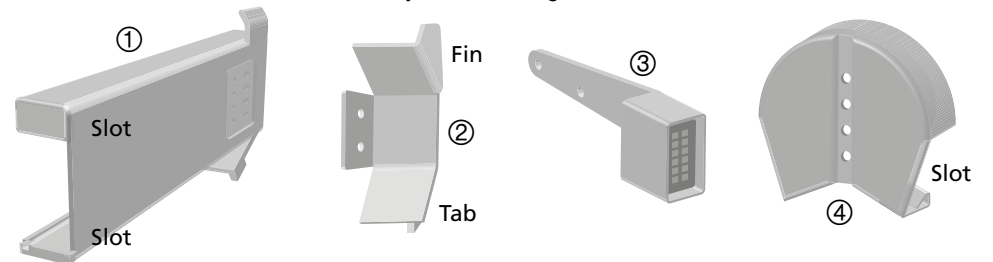


Blanking Plate

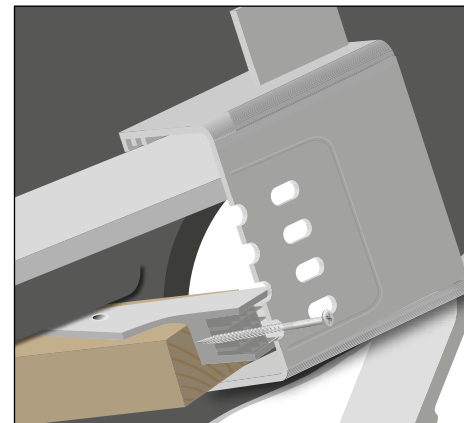
CAUSEWAY TILE DRY VERGE



Component System:

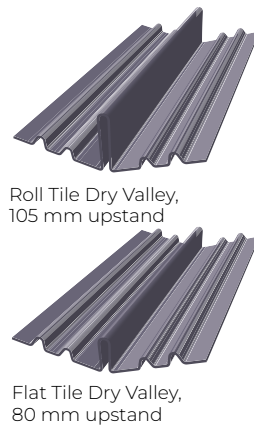
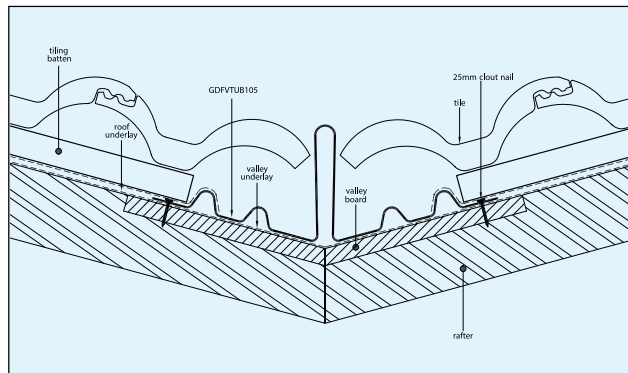


① Verge Cloak Unit ② Verge Eave End Unit ③ Batten End Nail Bracket ④ Ridge End Cloak Unit



- Unique slim dry verge design with straight edge bottom
- Manufactured from uPVC for excellent flexibility and U V stability
- Special sealing strip prevents rain ingress into verge system
- Complies with BS5534:2014 for verge fixing systems.

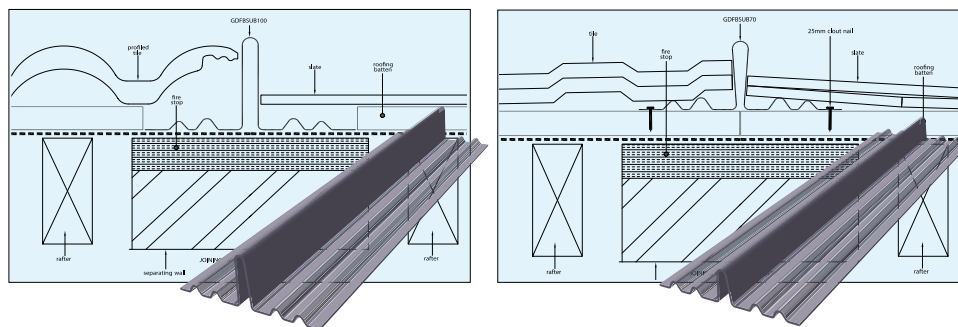
DRY VALLEY



Valley Troughs and Bonding strips are manufactured from lead free grey GRP (Glass Reinforced Polyester) to provide a cost effective alternative to traditional lead roof.

- Life expectancy of over 30 years
- Light and easy to transport, handle and install
- Virtually maintenance free
- BBA Certification (No 07/4492)

BONDING STRIP



The GRP Bonding Gutter creates a weather-tight joint between dissimilar roof coverings on semidetached and terrace homes whether it be new build or refurbishment

MANUFACTURING & HANDLING



Manufacturing, Handling and Surface Characteristics.

Northstone (NI) Ltd manufacture roof tiles in accordance with the British & European standard BS EN 490 and within an accredited Management system to BS EN 9001. Whilst every effort is made to produce a consistent product in every aspect we would point out that due to nature of the product, and as a consequence of the manufacturing & handling processes the following surface characteristics may occur. These are fully recognised both within the trade and by BS EN 490.

Scratches & Abrasions:

These can be caused by packing, loading, transport and handling on site: These are surface marks only and will disappear with normal weathering conditions.

Efflorescence:

This is a naturally occurring phenomenon in concrete products caused by weather conditions penetrating into the pores of the concrete and dissolving lime, the water then evaporates leaving a white film of lime. The same chemical process continues enabling it to be degraded and washed away with the rain, so that the efflorescence

disappears by itself. The level of lime and weather conditions can vary therefore the level of efflorescence can fluctuate also.

Mosses & Lichens:

Mosses and lichen tend to grow on roofs which are in the vicinity of trees or in shady, damp conditions. North facing slopes remain damper longer and attract moss and lichen growth more so than roof slopes which dry out quicker.

In normal circumstances these growths are not deleterious to the tile and does not effect the overall performance of the tile.

Surface Coating:

The majority of concrete roof tiles manufactured in the world are surface treated, the major benefit being to protect the tile during the early, critical stages of its lifespan. It is recognised in the roofing industry that the surface coating of a concrete tile is temporary, lasting only for a few years; long enough to give that protection to the early life of the product. The performance of the roof tile is not affected by any of the above conditions and the quality requirements of the tile remain intact.

Fixing Notice:

Where the wind load is calculated in accordance with BS 5534: 2014, it provides an uplift force which exceeds the dead load of the tile, mechanical fixings, in addition to the minimum fixings will be necessary. Factors which must be considered:

- Exposure and location of the site
- Roof pitch and rafter Length
- Height of the roof
- Local wind speeds
- Proximity to natural or artificial features affecting wind speeds

The Northstone digital wind loading fixing specification service is available free on request.

Colours

Colours and textures in this brochure are as accurate as can be reproduced by the printing process, however actual samples can be provided before ordering.

Terms and Conditions

Terms and conditions of sale and guarantees for products available in England, Scotland, Wales and Northern Ireland are available on request.

Other products available from Northstone Materials



Concrete Blocks

Northstone manufacture concrete blocks and bricks at five strategic locations around Northern Ireland. Our depots are open for both collection and deliveries from Newtownards, Ballynahinch, Toomebridge, Coleraine, and Omagh yards.

Ready Mixed Concrete

Northstone operate strategically placed concrete depots in the vicinity of all major population centres, providing an efficient service to its customers. All depots are members of QSRMC (The Quality Scheme for Ready Mixed Concrete) and subscribe fully to their quality and management standards bringing customers the ultimate in product quality and service.



Supply and Fix Roofing

Northstone is the largest and most professional roof tile supply and fix provider in the country. Expert roof tilers provide the total solution to roofing, either a new dwelling or re-roofing an existing house. The company are members of NRFC (National Federation of Roofing Contractors) and subscribe to Trustmark, a Government backed guarantee scheme.

Sands and Decorative Gravels

Northstone offer a complete range of sands suitable for the building, wet concrete industry and specialist sands for use in the horticulture and sports turf sectors. All sands are produced to comply with the most stringent British and European specifications. A wide range of decorative gravels are also available for use in hard landscape areas.



Quarry Stone

Northstone have seven hard rock quarries strategically located province wide to supply aggregates and fill products to the construction and agricultural markets

Traditional and Liquid Floor Screeds

Floor screed is available from three strategically placed locations to provide the floor screeder with a consistent quality floor screed throughout Northern Ireland and Donegal.



Materials Division

Shinny Road, Macosquin, Coleraine BT51 4PS | Toomebridge BT41 3SD

T : 028 7032 1100 **F** : 028 7032 2222

Roof Tile Location

51 Creagh Road, Toomebridge BT41 3SD **T** : 028 7965 1317

Northstone (NI) Ltd | sales@northstone-ni.com | www.northstonematerials.com

